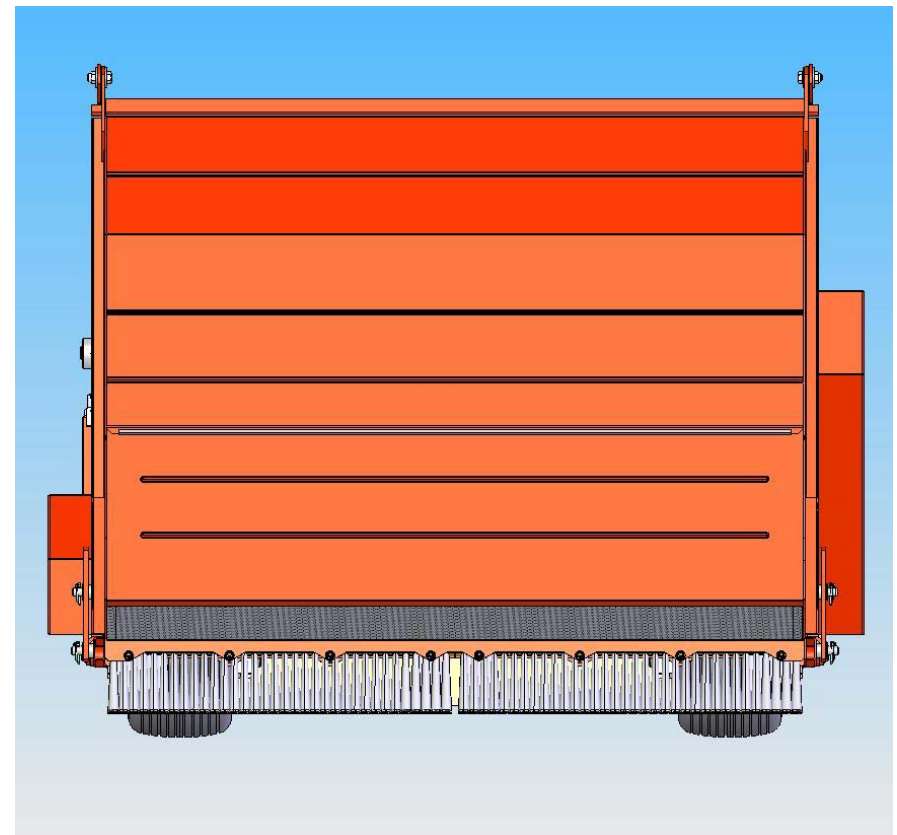
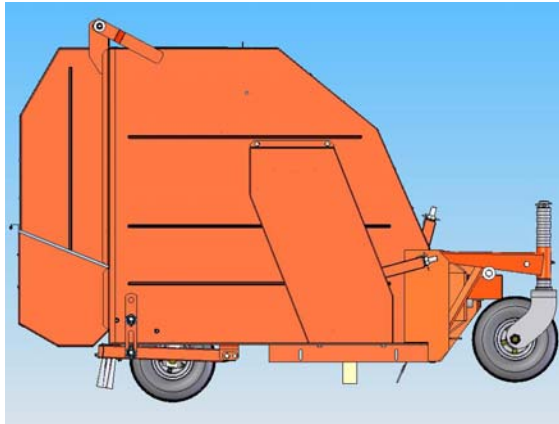
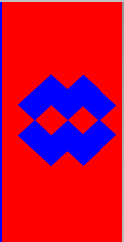


# *Brush, collect and separate*

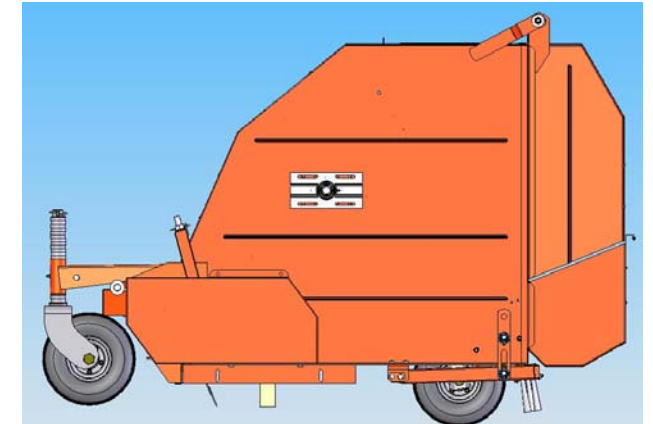
- *Extended life time*
- *Reduced injuries*
- *Increased desirability*
- *Conserved elasticity*



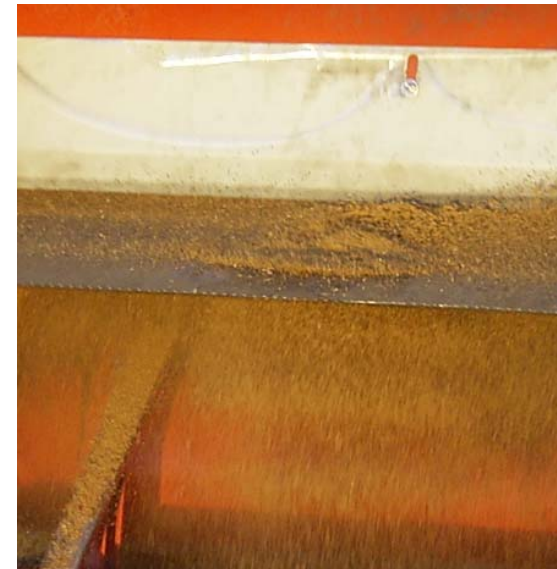
# ST 120



**ST120**  
**for artificial turf**  
**freshly**  
**engineered**



PTO driven brush in  
combination with  
active sieve  
and dirt box  
to pick up, collect and  
seperate base materials  
from others



# *ST 120*



Rubber  
filled in

soccer  
pitch

POR  
PLASTIC

# *ST 120*



ST 120

Straightens  
fibres

and

levels  
surface

# ST 120



Sieve  
seperating

Refuse  
and Debris

from  
Fill In  
Material

Hole Ø  
5 mm

# ST 120



Dirt  
container

Fibres

No

Fill In  
Material  
collected

# *ST 120*



SSV ULM  
1846

Green  
coloured  
rubber  
granules

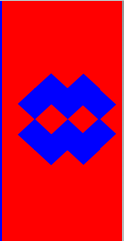
# *ST 120*



SSV ULM  
1846

Green  
coloured  
rubber  
granules

# *ST 120*



SSV ULM  
1846

Maple  
seeds  
and  
leafs

# ST 120



Maple seeds and leafes  
collected in dirt container

**Collects as well  
under  
heavy conditions  
and in  
daily maintenance**



# *ST 120*



Special built lift up frame  
on ST 120

Hydraulic  
Top Link  
is  
**NOT NECESSARY**

# *ST 120*



Attachement of ST 120 in  
standard three point  
linkage

Lift up  
to set  
working hight  
of active brush

Use sloted O-Rings